



20
24

ANNUAL REPORT

DETROIT REGION
AEROTROPOLIS[®]
DEVELOPMENT CORPORATION



INNOVATION & AVIATION

2024 welcomed many new and impactful capital investments to the Detroit Region Aerotropolis. The Corporation Board's focus on building an innovation ecosystem by targeting advanced manufacturing and mobility industries led to multiple announcements including a large expansion of navigable low- altitude airspace near DTW and the acquisition of 440 acres of property near Willow Run Airport.

The daily work of supporting greenfield expansion by actively marketing 6,000 acres of development-ready land centered in a world-class network of transportation infrastructure remains. However, the pathway to drive corporate expansion and new investment in our region has also moved into supporting mobility in the new aerospace economy.

Since 2020, the Aerotropolis communities joined efforts to build highways in the sky for advanced air mobility. This new infrastructure, grounded in authoritative municipal data, brought new advanced manufacturing prospects to the region. It also expanded on the multi-modal mobility network that is often a deciding factor when considering corporate expansion.

Our target industries, which include logistics, advanced manufacturing, and next-generation mobility are growing. Aerotropolis communities found a strong partner in the Michigan Economic Development Corporation (MEDC), the Office of Future Mobility and Electrification (OFME) and others.

Whether you are an Aerotropolis partner or a company looking to expand in Southeast Michigan, we invite you to explore this report to gain a better understanding of our region and join us in celebrating the successes of 2024.

CHRISTOPHER GIRDWOOD
CEO

DAVID GLAAB
Chairman of the Board



THE AEROTROPOLIS ADVANTAGE

The Detroit Region Aerotropolis Development Corporation is a four-community, two-county public-private economic development partnership driving corporate expansion and new investments around Detroit Metro and Willow Run Airports.

TRANSPORTATION & LOGISTICS NETWORK

DETROIT METROPOLITAN AIRPORT

- » 18th busiest airport in North America
- » 35 million passengers per year
- » 1,100 flights per day
- » 140 non-stop destinations on four continents
- » 464 million pounds of cargo per year

WILLOW RUN AIRPORT

- » Leading "all cargo" airport in the USA
- » 200 million pounds of cargo per year
- » U.S. Customs operation on site
- » Corporate and charter flight hub
- » 24-hour service

PORT OF DETROIT

- » 29 terminals handle 17 million tons of cargo every year

INTERNATIONAL GATEWAY

- » 2nd busiest border crossing in North America, providing 2 bridges and a rail tunnel to Canada

AMERICAN CENTER FOR MOBILITY

- » 335-acre test facility for connected and autonomous vehicles
- » 2.5-mile highway loop, entrance/exit ramps, reconfigurable intersection, four-seasons testing

6,000 AVAILABLE ACRES 

5 RAIL LINES 

3 FREEWAYS 

2 AIRPORTS 

1 AMERICAN CENTER FOR MOBILITY 



MARKETING & ADVERTISING

In 2024, the Aerotropolis worked closely with the Wayne County Airport Authority to promote economic development, in addition sharing the safety and security work that has been completed at DTW and Willow Run: <https://www.metroairport.com/>

The Aerotropolis team placed 19 advertisements in 7 publications, reaching millions of readers worldwide in print and digital formats. The target audience of these increased efforts are C-suite decision makers, site consultants, and corporate real estate professionals.

COMPANIES ARE INVESTING AND
LANDING HERE

DETROIT REGION AEROTROPOLIS[®]
DEVELOPMENT CORPORATION

The best transportation and logistics network in the nation.

- 6,000 AVAILABLE ACRES
- 5 RAIL LINES
- 3 FREEWAYS
- 2 AIRPORTS
- 1 AMERICAN CENTER FOR MOBILITY

WHERE WILL YOU LAND
YOUR NEXT EXPANSION PROJECT?

DETROIT-METRO • WILLOW RUN
WAYNE COUNTY AIRPORT AUTHORITY
www.metroairport.com

Join these companies and many others in the Detroit Region Aerotropolis

Part of the Detroit Foreign Trade Zone FTZ No. 70

AMAZON | BROSE | FORD | KROGER | MOPAR | OUR NEXT ENERGY | PENSKE

Detroit Region Aerotropolis | Wayne County, Michigan | www.detroitaero.org | (734) 992-2286

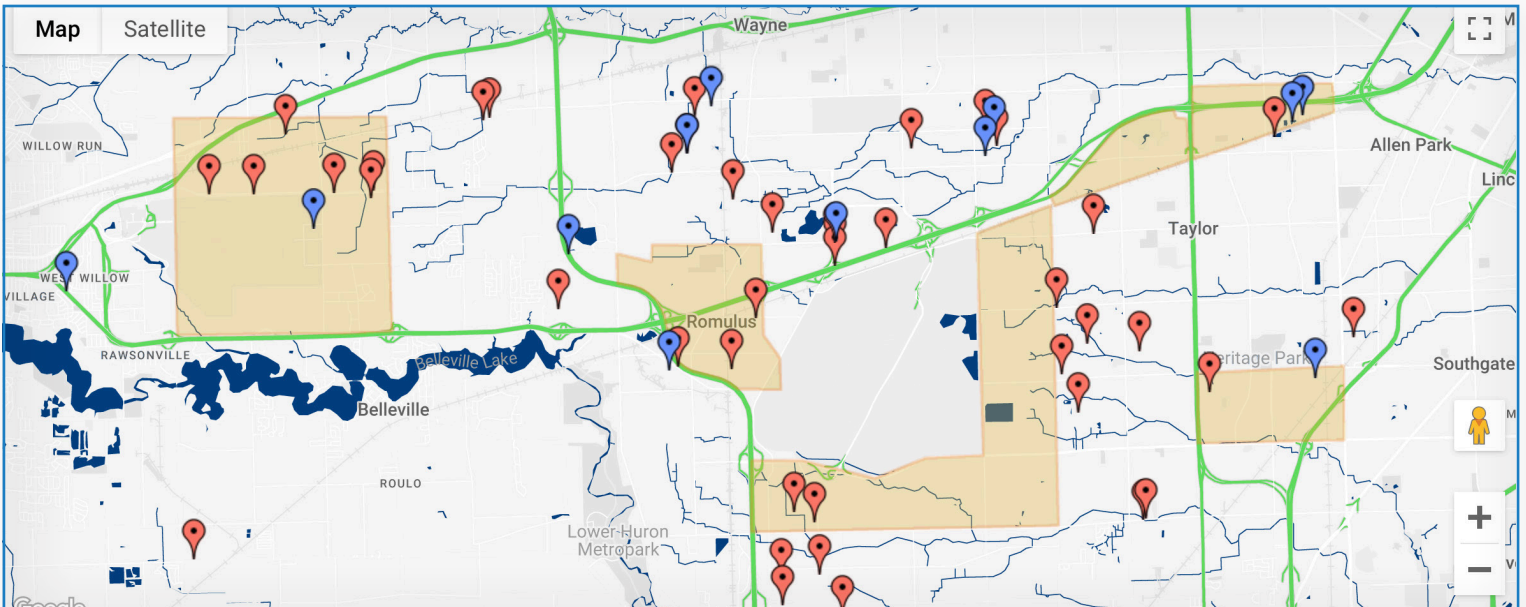
MEDIA COVERAGE

- Ann Arbor News
- CBS 62 Michigan Matters
- City of Taylor Sportsplex
- Crain's Detroit Business
- Crain's Chicago Business
- Crain's New York Business
- DBusiness Magazine
- Detroit Driven
- Detroit Free Press
- Detroit News
- Destination Downriver
- FOX 2 News
- GovLoop
- Livability.com
- Michigan.com
- MI Tech News
- MLIVE
- WDIV Click on Detroit
- WDIV Live in the D
- WhereNext Magazine

BUSINESS ATTRACTION AND EXPANSION

One of the pillars of Aerotropolis' business development strategy is connecting with our target audience. In 2024, the Aerotropolis submitted over 230 vacant buildings and sites (10+ acre sites noted in red below) to compete for high quality jobs in the region. The blue marks below indicate vacant industrial properties that the Aerotropolis team markets daily.

Working with the Michigan Economic Development Corporation, Detroit Regional Partnership, Wayne County and the Aerotropolis communities we have built a strong team approach to economic development.



VISIT DETROITAERO.ORG/PROPERTIES/ TO ACCESS INDIVIDUAL PROPERTY DATA SHEETS.

BY THE NUMBERS

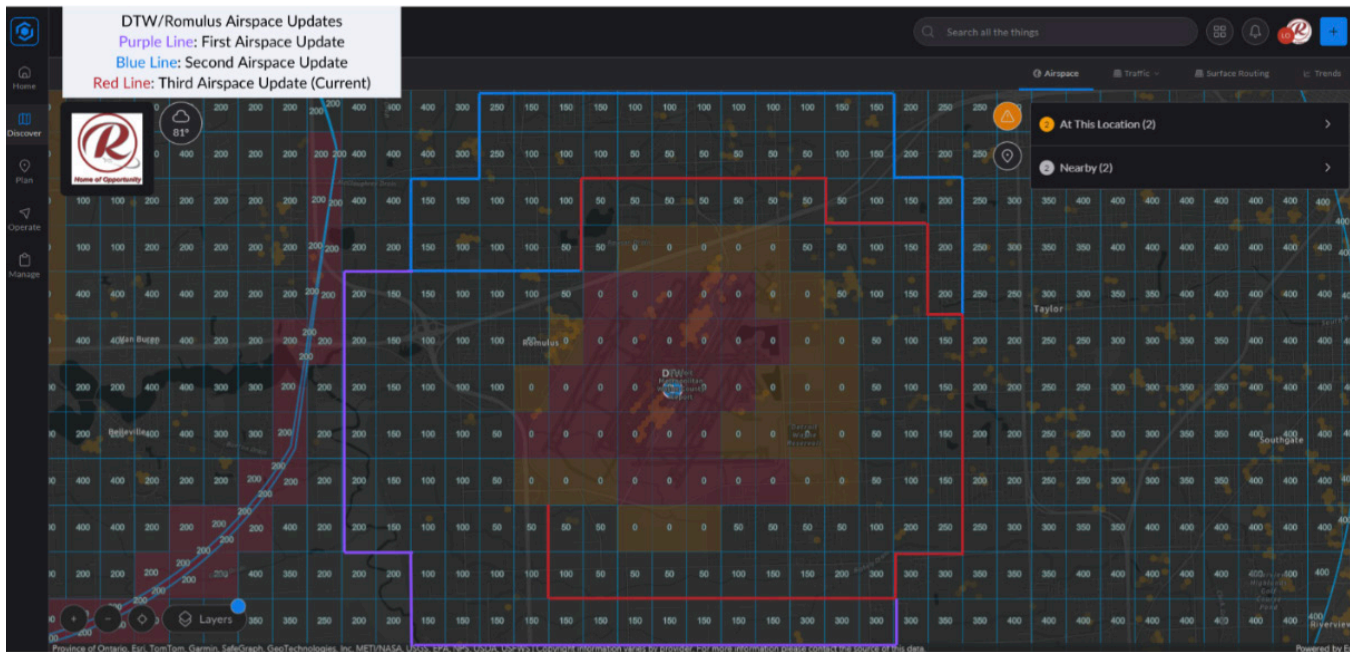
67 CONDUCTED **SITE TOURS**

27 **RESPONSES** TO REQUESTS FOR INFORMATION (RFIS)

230 **SITES** SUBMITTED FOR LOCATION CONSIDERATION

26 BUSINESS DEVELOPMENT TRADESHOWS AND **CONFERENCES**

BUILDING HIGHWAYS IN THE SKY



Since January 2020, Detroit Aerotropolis licensed the Airspace Link AirHub platform to establish and test a new low altitude drone infrastructure in the region. The complete AirHub platform including AirHub for Pilots and AirHub for Government was developed and implemented for all four Aerotropolis communities.

Data from the communities, county, state, local and commercial sources were collected, processed, and analyzed to identify relevant hazards and risks associated with UAS operations occurring within Aerotropolis is used for building safe “Highways in the Sky” that are in harmony with Aerotropolis community interests.

The City of Romulus was thrilled to announce a significant advancement in aviation technology with the expansion of drone-accessible airspace near the Detroit Metropolitan Airport (DTW). This development, made possible through changes implemented by the Federal Aviation Administration (FAA), marks a significant step forward for Romulus in embracing innovation, economic growth, and enhanced community life.

Romulus’s active participation in the Detroit Region Aerotropolis, a collaborative effort to transform the region into a manufacturing, logistics, and aviation hub, was crucial in this process. The city’s involvement in Aerotropolis’s initiative to integrate drone technology into regional infrastructure significantly contributed to the success of these airspace changes.

This expanded airspace access is expected to unlock a wealth of economic opportunities, enabling local businesses and individuals to explore various UAS technologies. The applications are diverse, encompassing everything from medical and package delivery to infrastructure inspection and public safety use cases.

This change is anticipated to fuel economic expansion, stimulate job growth, forge new educational avenues in science, technology, engineering, and mathematics (STEM), and is likely to bring improvements in public health and safety while introducing unique recreational activities, such as drone parks.

PRESS HIGHLIGHTS

CRAIN'S DETROIT BUSINESS:

COUNTY OFFICIALS FUEL GROWTH IN URBAN AND RURAL AREAS WITH DATA-DRIVEN TOOLS AND STRATEGIC PLANS



Washtenaw County Administrator Gregory Dill and Commissioner Justin Hodge

With a population of 372,000 in the 2020 census, Washtenaw County encompasses major city centers like Ann Arbor and Ypsilanti — both home to world-class academic institutions — and a proud farming community in outlying townships with a rich history of agricultural innovation of their own. Working together, county leaders have harnessed data-driven, nimble and responsive tools to make sure Washtenaw County is at the forefront of creative community planning.

“We really want to make sure that entrepreneurship and business opportunities are here, and that we illuminate them in the right way.” - Gregory Dill, Washtenaw County Administrator

“The Barrier Busters is an innovative program. People don’t have money in their bank accounts for many different kinds of emergencies. That’s why we have various clusters of support for them.”

- Justin Hodge, Washtenaw County Commissioner for District 5

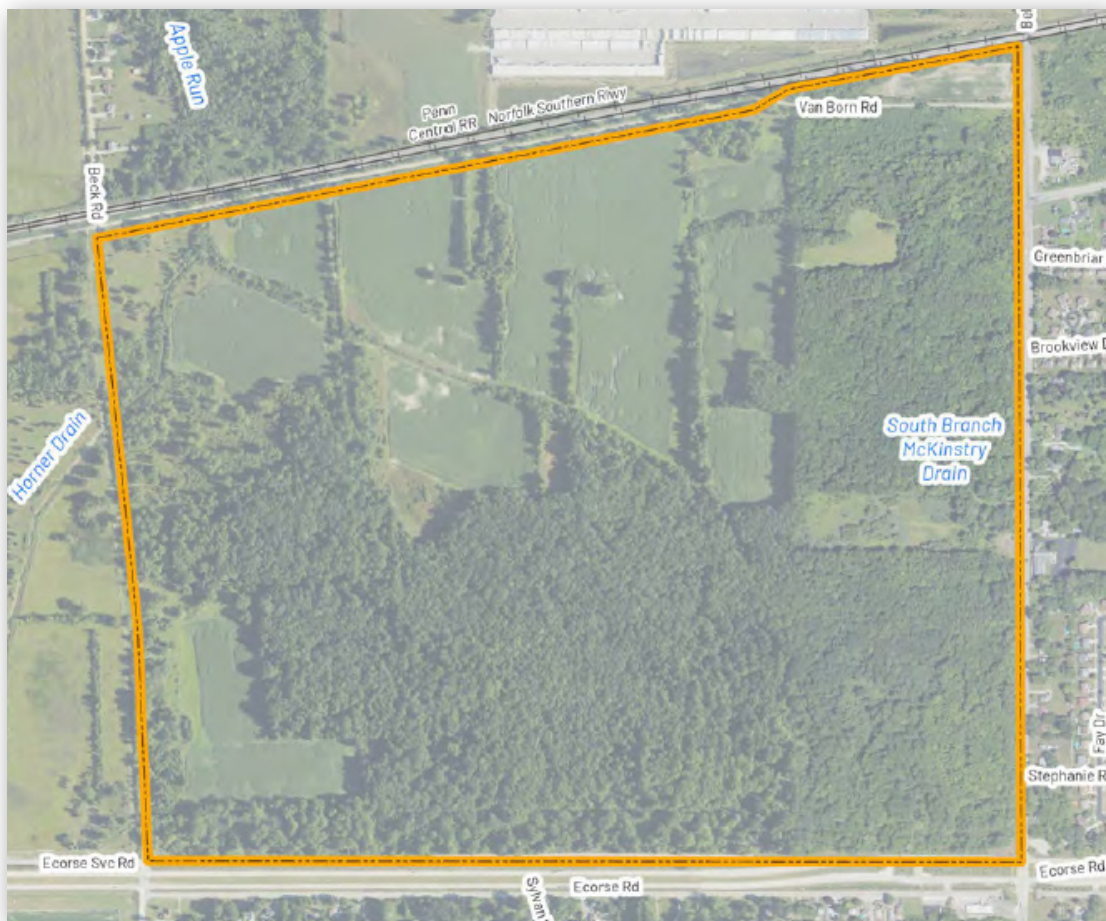
PRESS HIGHLIGHTS

DETROIT AEROTROPOLIS RECENTLY ACQUIRED 440 ACRES IN VAN BUREN TOWNSHIP!

Governor Gretchen Whitmer joined the Michigan Economic Development Corporation (MEDC) and recently announced the approval of \$87.5 million in grant funding for 18 projects across the state of Michigan through the Strategic Site Readiness Program (SSRP) to support the state's efforts to compete for and win transformative projects.

The SSRP was among the several initiatives in the economic development bills signed into law by Gov. Whitmer in December 2021. Public Act 194 of 2022 authorized additional SSRP funding and directed it at specific SSRP categories, including a \$100 million allocation for strategic sites where an end-user is unknown.

Aerotropolis received \$18.6 million to acquire 440 acres in Van Buren Township, Michigan.



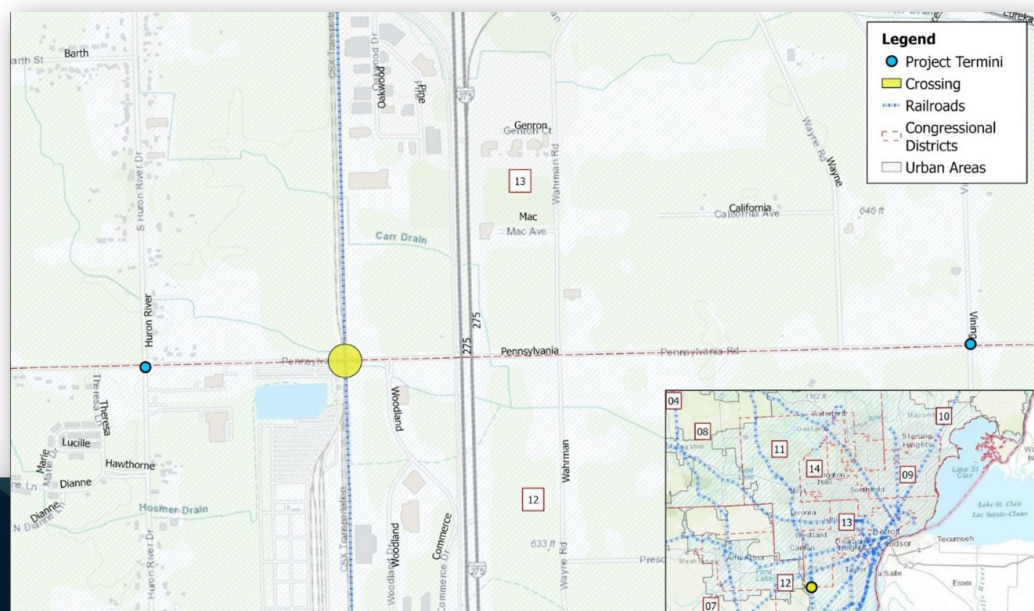
GRADE SEPARATION

DETROIT REGION AEROTROPOLIS CHAIRMAN DAVID GLAAB JOINED ROMULUS MAYOR ROBERT McCRAIGHT AND THE AEROTROPOLIS BOARD OF DIRECTORS TO ANNOUNCE THAT AEROTROPOLIS RECEIVED \$865,775 TO BEGIN PRELIMINARY GEOTECHNICAL AND ENGINEERING WORK FOR PENNSYLVANIA ROAD GRADE SEPARATION.

Congresswoman Debbie Dingell led the effort to secure \$865,775 for Pennsylvania Road grade separation through the Federal Transportation, Housing and Urban Development Community Project Funding process.

Pennsylvania Road borders the City of Romulus and Huron Township, Michigan, located in the 12th and 13th Congressional Districts. The CSX rail crossing at Pennsylvania Road is oftentimes blocked to roadway traffic which led the communities to seek federal funding assistance for a grade separation.

Public safety response times to the areas west of the CSX tracks can vary significantly if the crossing is blocked with a train. Delays are typically encountered as far as Eureka Road (one mile north of Pennsylvania Road) from moving trains will be 2 to 3 minutes and stopped trains can be significantly longer. The only other options are to wait for the train to move, which may be a long delay, or to turn the emergency vehicles around on the street, a difficult maneuver for a large vehicle.



BUSINESS DEVELOPMENT SUCCESS

Throughout 2024, Ashely Capital was busy preparing the Romulus Distribution Center for over 1 million square feet of new industrial development to support Aerotropolis targeted industries!

CMAC Transportation is preparing to build close to 378,000 square feet of new space to support logistics operations in the City of Taylor.

Aerotropolis received \$18.6 million to acquire 440 acres of industrial-zoned property in Van Buren Township, Michigan.



300 NEW **JOB**S
ESTIMATED

3 CLOSED **PROJECTS**

MILLION IN CAPITAL \$110M
INVESTMENT

COMMUNITIES & PARTNERS

Regional economic development is only as strong as the individual parties that comprise “the region” and the Detroit Region Aerotropolis Development Corporation is no exception.

Our success in 2024 and beyond would not be possible without the continued collaboration with and commitment of our communities and partners. Each of the following communities, counties, and organizations – both public and private are critical to the success of our business attraction efforts. To each, we say thank you!

“OUR COMBINED EFFORTS TO IMPROVE PUBLIC INFRASTRUCTURE BOUGHT NEW FEDERAL FUNDING FOR GRADE SEPARATION TO OUR REGION. IT IS BECAUSE OF STRONG PUBLIC-PRIVATE PARTNERSHIPS LIKE THE DETROIT REGION AEROTROPOLIS THAT WE ARE ABLE TO CELEBRATE THESE SUCCESSES IN 2024 AND BEYOND.

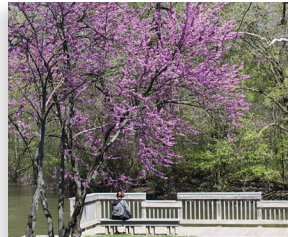
- DAVID GLAAB, CHAIRMAN OF THE BOARD



CITY OF ROMULUS



CITY OF TAYLOR



HURON CHARTER TOWNSHIP



MICHIGAN ECONOMIC DEVELOPMENT CORPORATION



VAN BUREN TOWNSHIP



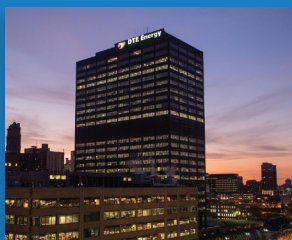
WASHTENAW COUNTY



WAYNE COUNTY



WAYNE COUNTY AIRPORT AUTHORITY



DTE ENERGY

"Our continued partnership with Aerotropolis and the airport communities surrounding Detroit Metro and Willow Run Airports has led to numerous job creation announcements for Wayne County residents," said Wayne County Executive Warren C. Evans.

"As Wayne County's economic development boom continues gain momentum, Aerotropolis continues to be a critical factor in building a better Wayne County."

- Wayne County Executive Warren C. Evans

X @DetroitAero

in Detroit Region Aerotropolis

🌐 DetroitAero.org

DETROIT REGION AEROTROPOLIS[®] DEVELOPMENT CORPORATION

